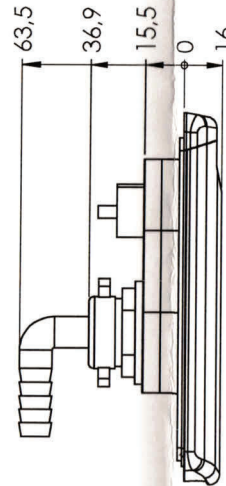


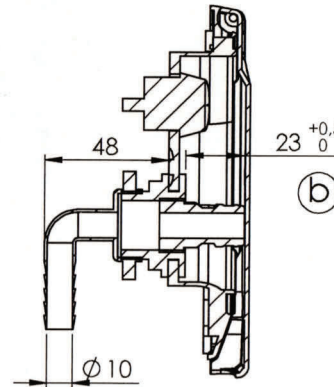
switch:  
 - on-off  
 - 10(4)A 250V~  
 - plug connectors:  
 4,8x0,8mm

torque:

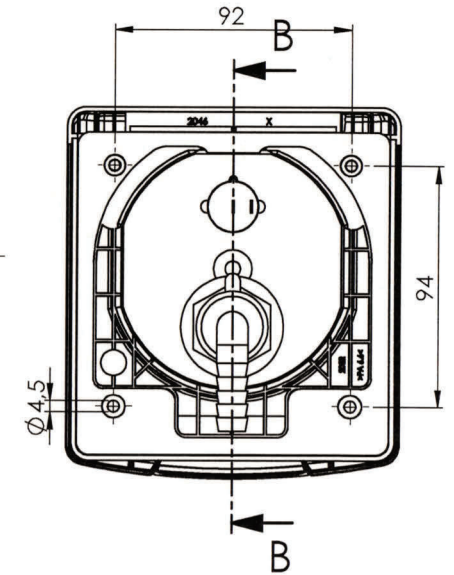
- water butt screw connection: 8 Nm
- elbow screw connection: max 4 Nm



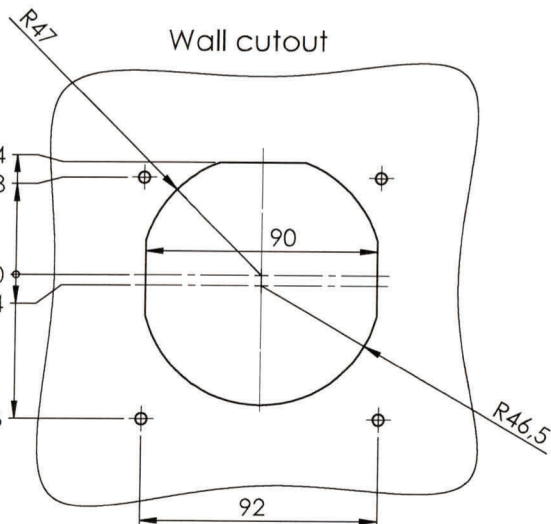
Section B-B



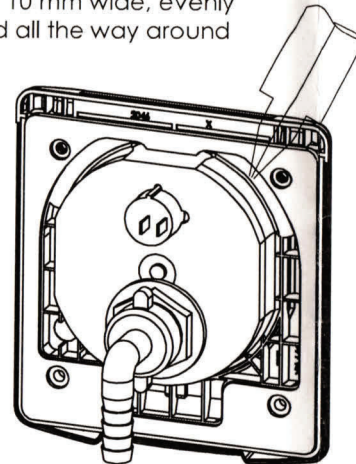
tubing diameter



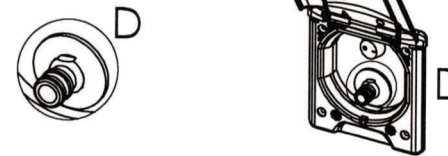
Shown without hinged lid



**Recommendation:**  
 Apply sealant (if required)  
 ca. 10 mm wide, evenly  
 and all the way around



Water connection must  
 be screwed in least 23mm  
 that technical functionality  
 can be performed



**Safety notice:**  
 Magnets may affect the operation  
 of pacemakers and implantable defibrillators.

Magnets generate extensive and strong  
 magnetic fields. They can damage a range  
 of devices. Credit and debit cards, among  
 others.

- Adapt pre-drilling to screw core diameters (e.g. countersunk screw SD4.2 x19)
- Load torque for flanged fixing max. 1 Nm
- Tightening torque must be adjusted to substrate and screws
- EPDM seal is designed for smooth caravan walls - if using on uneven caravan walls, additional sealing measures (e.g. application of sealant) are required
- Install built-in device immediately after applying sealant
- Lid closing force at least 4N
- Color variants according to model variant key 8101800
- Water components unmounted in delivery
- Seal must be on site
- Assembly may be carried out by trained and responsible personnel only

			Oberfläche / Farbe		Maßstab	1:2	Gewicht	
					Werkstoff			
					Benennung			
					Water Socket with magnet			
					Installation instructions			
					Zeichnungsnummer			Blatt
					316800x			2
					Ersatz für:			Bl. A3
c	ÄM192/20	25.08.	Erndt	<b>ABL</b>				
b	ÄM187/20	18.08.	Erndt					
a	KP489/18	27.02.2018	Erndt					
Index	Änderung	Datum	Name					